

RESERVE COPY

PATENT SPECIFICATION



Application Date: May 5, 1925. No. 11,654/25. 233,364

Complete Accepted: Sept. 6, 1926.

COMPLETE SPECIFICATION.

Improvements in or relating to Regulating Devices for Clockwork-operated Fuses for Projectiles.

I, JUSTIN ERWIN POLLAK, Chartered Patent Agent, of 20 to 23, Holborn, London, E.C. 1, a British subject, do hereby declare the nature of this invention and in what manner the same is to be performed, as communicated to me by Tavannes Watch Company, Société Anonyme, of Tavannes, Canton of Berne, Switzerland, a Swiss corporation, to be particularly described and ascertained in and by the following statement:—

The invention concerns improvements in or relating to regulating devices for regulating the clockwork movements of mechanical fuses for projectiles of the type, for example, described in Specification of Letters Patent No. 219,941.

For the purpose of holding the balance mechanism of the regulator of a mechanical fuse stationary until the firing of the projectile it has been proposed to provide means operated by centrifugal force and engaging either one wheel of the gear train driving the balance or, in the case of a balance wheel having projecting arms, one of the arms thereof.

Centrifugally operated means acting on the balance wheel are provided in accordance with the invention for the purpose mentioned but the balance wheel of this invention in contradistinction to the arrangement just described, is formed of a disc member on the periphery of which is provided a notch normally engaged by a bolt (constituting the centrifugal locking means) for the purpose of locking the balance until the departure of the projectile.

The attached drawing represents by way of example an embodiment of the invention.

Fig. 1 is a plan view of a part of a fuse to which the invention is applied, and

Fig. 2 is a partial cross section of this fuse on the line II—II of Fig. 1.

In the drawing 1 and 2 indicate respectively the top and intermediary cross plates of the fuse. 4 indicates the spindle of the balance, which is journalled axially within the fuse and carries between these plates 1 and 2 the regulating balance wheel 5, which is of disc form as shown.

This balance wheel is locked until the moment of firing the projectile by a bolt 19 moving in a guide 23 in the plate 1 and normally engaged in a notch 20 provided on the periphery of the wheel 5. This bolt is carried by a lever 21 (Fig. 1) which is pivoted at 22 on the plate 1 and which, at the moment of firing, is automatically moved under the action of centrifugal force in the direction of the arrow *a*, so as to liberate the wheel 5.

Having now particularly described and ascertained the nature of my said invention and in what manner the same is to be performed, as communicated to me from abroad, I declare that what I claim is:—

1. A regulating device for the clockwork movement of mechanical fuses for projectiles characterised by the fact that a notch, provided on the periphery of a balance wheel of disc form, is normally engaged by a bolt which thereby prevents movement of the said wheel but which, after the firing of the projectile, is thrown out of engagement with the notch on the balance wheel by centrifugal force.

2. A regulating device for clockwork operated fuses substantially as described and as illustrated in the accompanying drawings.

Dated this 5th day of May, 1925.

DICKER & POLLAK, Chartered Patent Agents, 20 to 23, Holborn, London, E.C. 1, Agents for the Applicant.

Fig. 1.

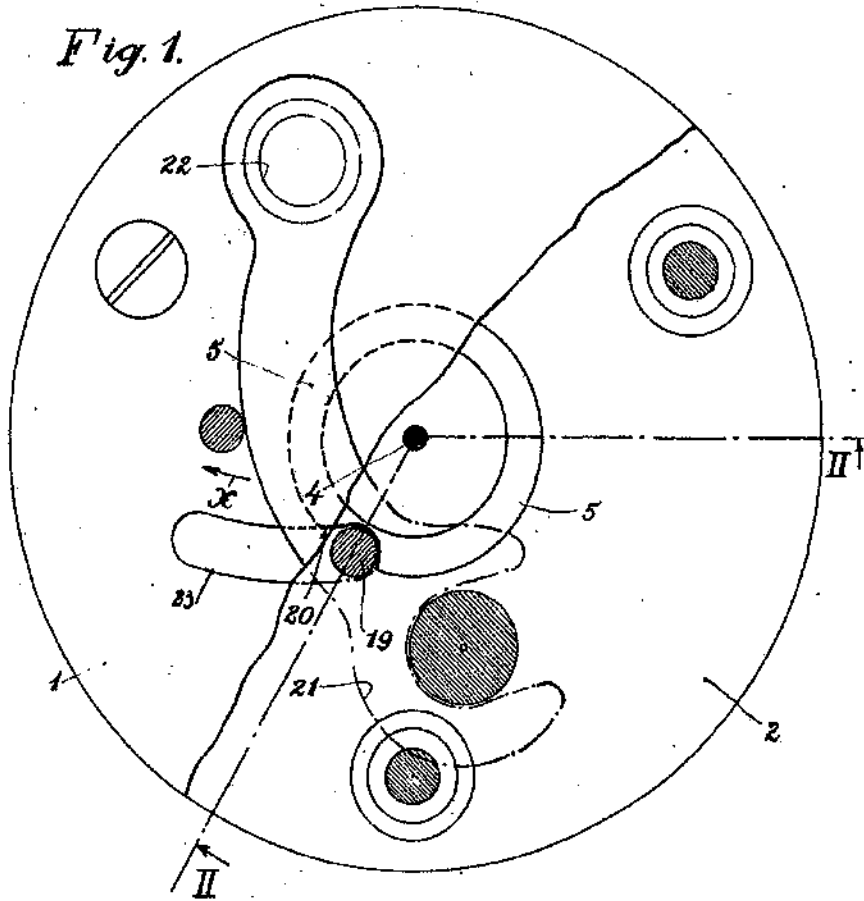
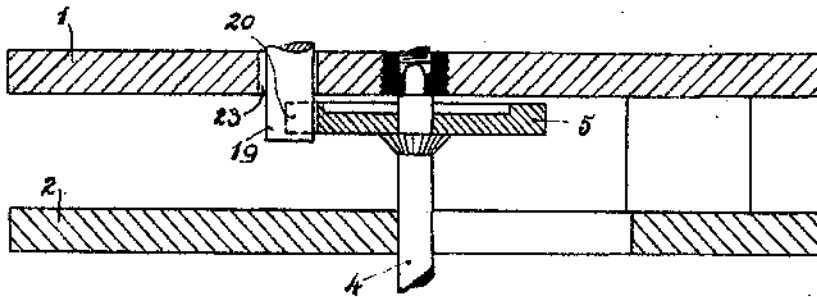


Fig. 2.



[This Drawing is a reproduction of the Original on a reduced scale.]